



27X78m²

18m

420m²,

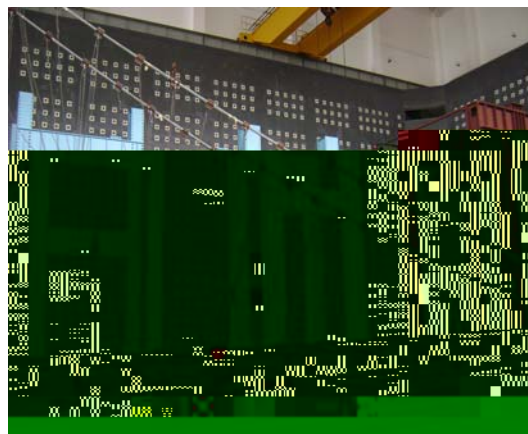
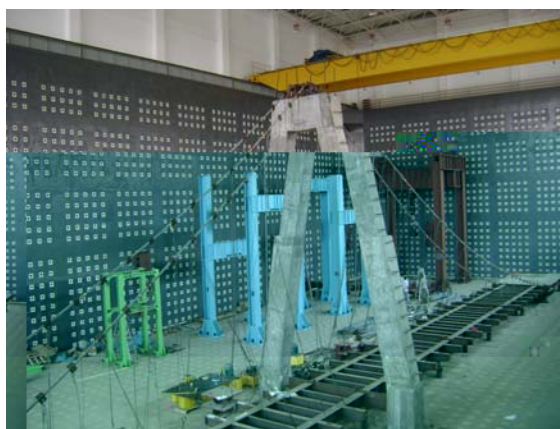
24x36m²

L

14m

36m,

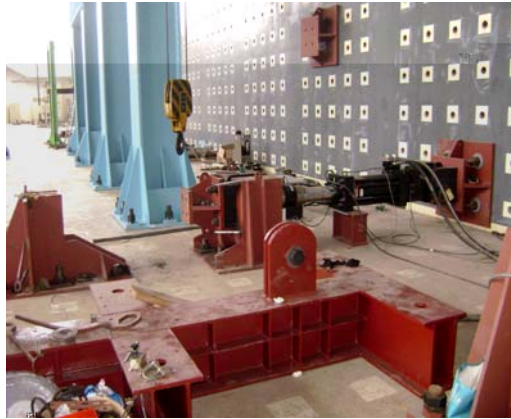
14.6m



)



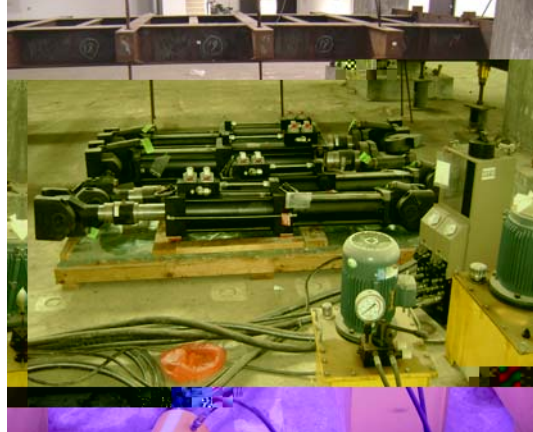
03



04



05



06

MTS

2

—

14

36

L

14.6

5000KN

2000KN 1000KN

10000KN

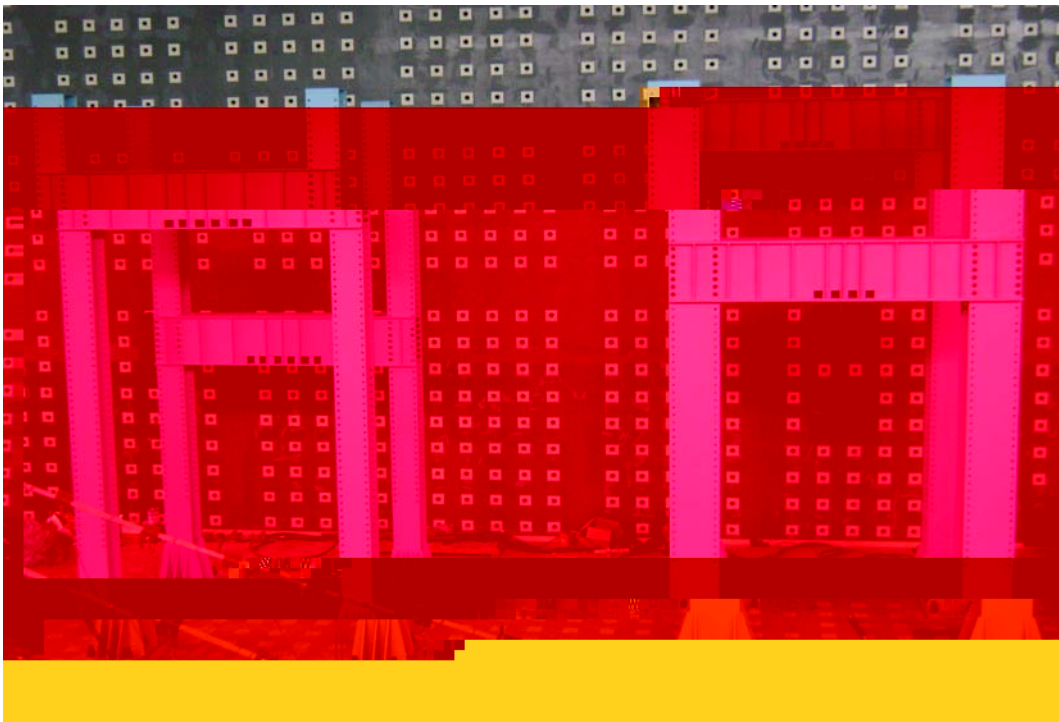
MTS

6300KN

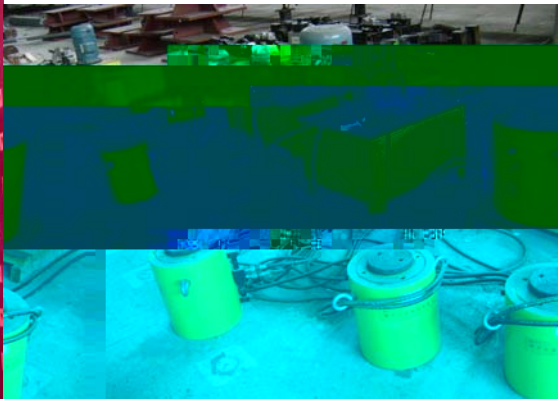
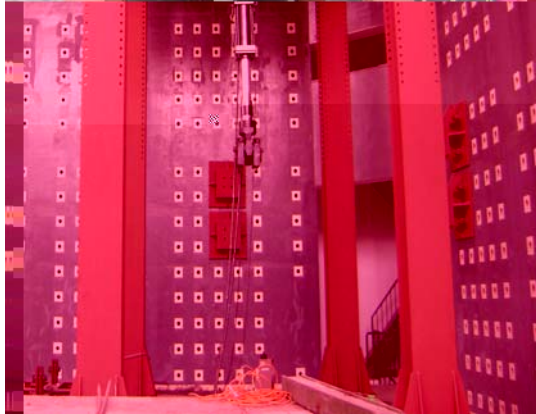
TML



01 10000kN

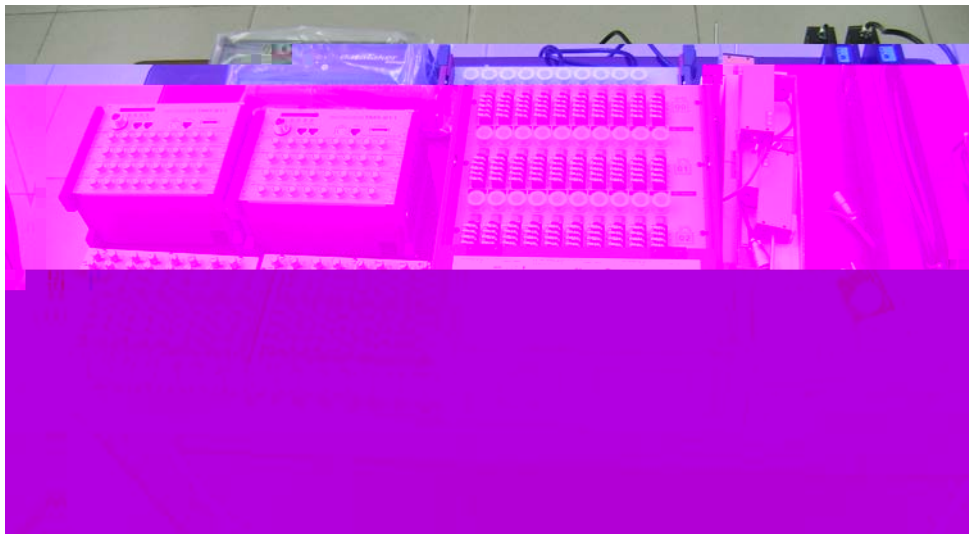


02 1000kN/2000kN



03 5000kN

04



06

3

500KN

MTS



4

2 1.5m



,

ANSYS10.0 Abaqus6.7

FEAP Opensees

CFX



1

1

2

Construction and Building Materials

1

1

2

5

Journal of Contractual Steel

Research

FRP

46 ,

SCI

4

EI

12

5

1

2

1

2010-04~

FRP RC

:

(1) , FRP ,
2009.1~2012.1, 10802023

(2) , , 2008.10~2011.10
2008B010600011

(3) FRP RC
2009 1 ~2010 12

510006

TEL +8615915805955 +862039322538